



OBERLIN
PRESERVE

3 BEDS | 3.5 BATHS

Total Living Area: 4,080 sqft

Heated: 2,730 sqft

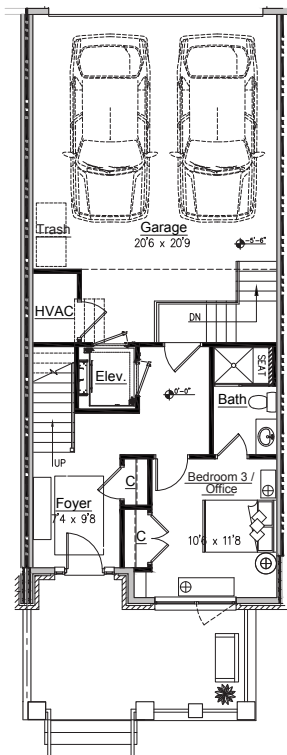
Unheated: 680 sqft

Porches: 360 sqft

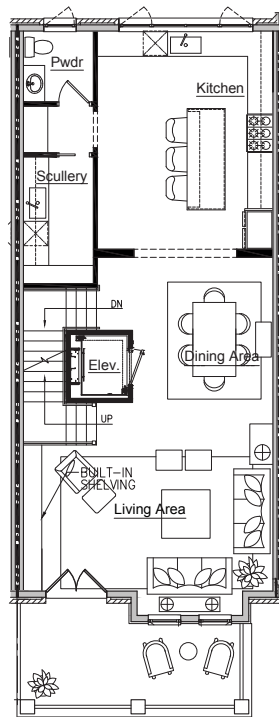
Rooftop Terrace: 310 sqft

2315 PETTIFORD ROAD

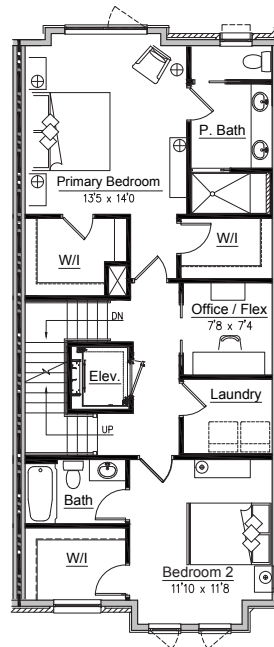
First Floor



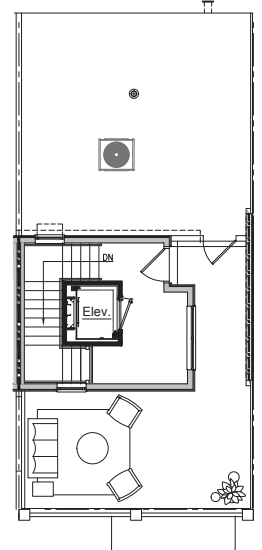
Second Floor



Third Floor



Roof Level



FRONT ELEVATION



The Azalea Residences

*Floorplans are for illustrative purposes only. Representations are not guaranteed to be drawn to scale, and architectural details or features may be subject to variation.