



**OBERLIN**  
PRESERVE

**3 BEDS | 3.5 BATHS**

TOTAL LIVING AREA: 4,080 SQFT

HEATED: 2,730 SQFT

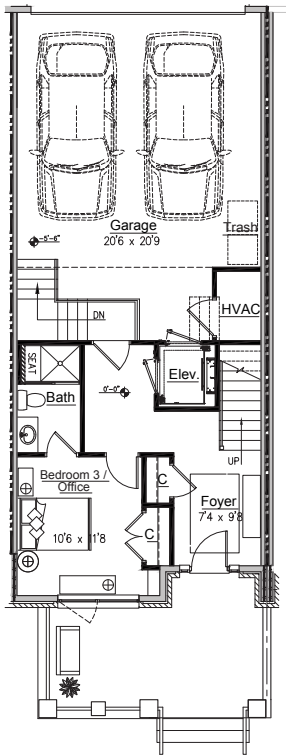
UNHEATED: 680 SQFT

PORCHES: 360 SQFT

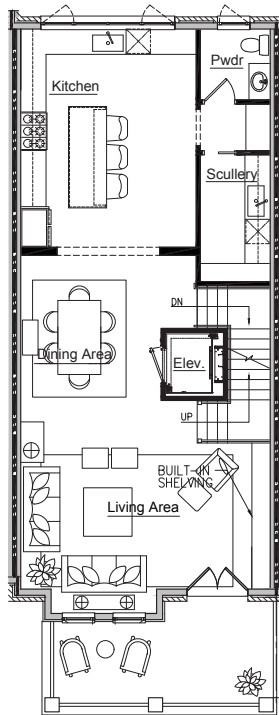
ROOFTOP TERRACE: 310 SQFT

# 1321 CHESTER ROAD

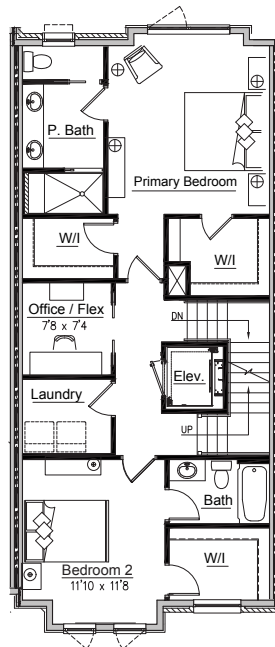
First Floor



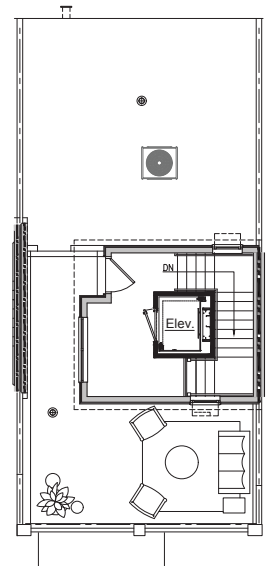
Second Floor



Third Floor



Roof Level



FRONT ELEVATION



The Azalea Residences

\*Floorplans are for illustrative purposes only. Representations are not guaranteed to be drawn to scale, and architectural details or features may be subject to variation.